

SUCCESS STORY

1LINK ENSURES 100% SERVICE UPTIME WITH JBS LIVE DATA CENTER MIGRATION

Overview

1LINK, Pakistan's premier payment service provider, operates as the backbone of the nation's interbank transactions, powering digital banking, bill payments, and payment gateways for over **50 million end users**. Faced with the critical challenge of upgrading its infrastructure without service disruption, 1LINK entrusted JBS to design and execute a seamless migration to a next-generation **parallel data center environment**.

With JBS's expertise, over **250+ critical devices and cabling systems** were migrated in a **fully live environment** with **0 seconds downtime**. Both primary and disaster recovery (DR) sites remained fully operational, and the project was successfully completed **one week ahead of the client's deadline**.



Solution overview

- **Solution partner:** JBS (www.jbs.live)
- **Solution implemented:**
 - End-to-End Data Center Migration & Infrastructure Modernization

Challenges

Zero-downtime requirement in a live environment	The migration had to occur while 1LINK's services remained fully live, where even seconds of outage could disrupt 50M+ daily transactions .
Migration of 250+ critical devices & cables	The project involved shifting hundreds of interconnected devices and cabling systems, where a single misstep could cascade into service-wide failures.
Nationwide trust at risk	As the backbone of Pakistan's digital payments, 1LINK could not afford any reputational or financial damage caused by downtime, failed transactions, or loss of customer confidence.
Simultaneous primary & disaster recovery (DR) operations	Both the primary data center and DR site needed to remain active and synchronized throughout the migration to maintain uninterrupted continuity.

The solution provided by JBS

JBS designed and deployed a **parallel data center environment**, allowing critical systems to be migrated seamlessly without interrupting live operations. Every device and connection was carefully mapped, tested, and transitioned under continuous monitoring. With expert coordination, JBS ensured both primary and DR sites remained fully live, maintaining **100% service availability**.

The migration was executed with precision, finishing **ahead of schedule** while strengthening disaster recovery, operational resilience, and scalability for future growth.

How it solved the challenges

Ensuring zero-downtime in a live environment

JBS deployed a **parallel data center setup** that allowed systems to be migrated in phases while keeping 1LINK's services fully operational. Continuous monitoring and fallback redundancies guaranteed **0 seconds of downtime** throughout the migration.

Structured migration of 250+ critical devices & cables

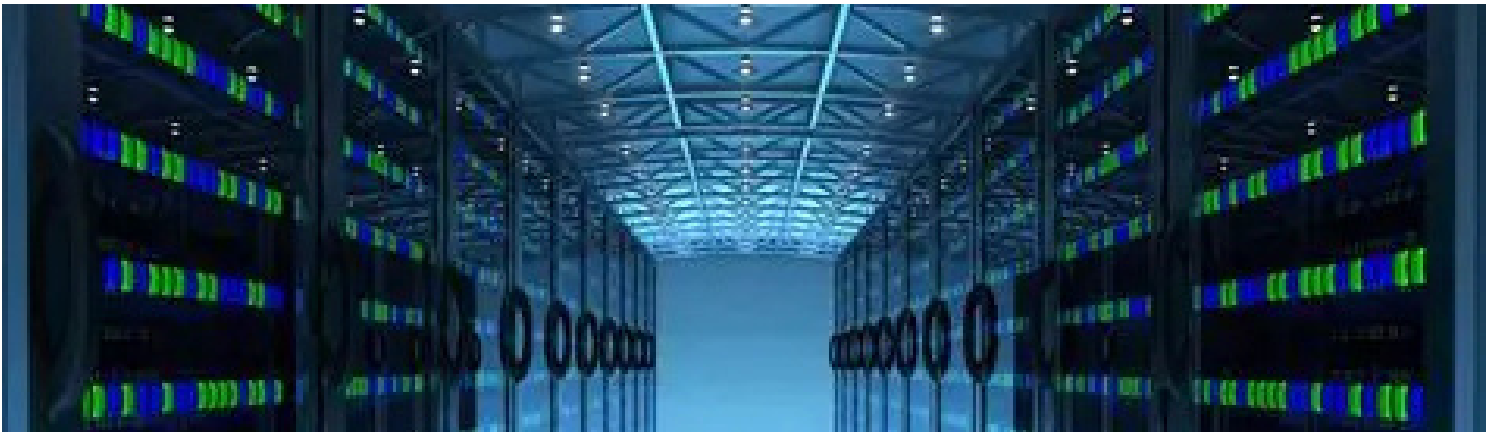
Every device and cable was meticulously mapped, validated, and tested prior to migration. Using a **step-by-step transition plan**, JBS ensured seamless relocation of **250+ critical assets** without errors or data loss.

Maintaining simultaneous primary & DR operations

Both the primary and DR sites were kept live and synchronized during the migration. This dual-site continuity ensured **transactional integrity and uninterrupted service** across the nationwide network.

Protecting nationwide trust and business continuity

With executive oversight and round-the-clock expert teams, JBS implemented strict risk mitigation protocols. This preserved 1LINK's reputation as Pakistan's trusted digital backbone and delivered the project **ahead of the client's deadline**.



Why JBS

- A **proven track record** of successful project deliveries with measurable outcomes
- **Expert-level certifications** in cybersecurity, guaranteeing deep technical expertise and best-in-class implementation

Key benefits of the solution

- **0 seconds downtime** during live migration.
- **250+ critical devices** successfully migrated.
- **50M+ end users** unaffected throughout the process.
- Project completed **1 week ahead of client deadline**.
- Strengthened **disaster recovery and infrastructure resilience**.

Conclusion

Through meticulous planning and execution, JBS enabled 1LINK to modernize its infrastructure without service disruption which is a rare achievement in data center migration. The project delivered **zero downtime, improved resiliency, and enhanced scalability**, reinforcing JBS's position as a trusted technology partner for mission-critical digital infrastructure.



Contact us

Learn how JBS can help secure your organization with future-ready AI-powered solutions.

 Visit: www.jbs.live or contact us at marketing@jbs.live

